

# ASSEMBLY INSTRUCTIONS | NOBLE EXTENSION DINING TABLE

**IMPORTANT:** This unit requires at minimum 2 people to assemble



**DO NOT USE A DRILL FOR ASSEMBLY**



## PARTS CHECKLIST

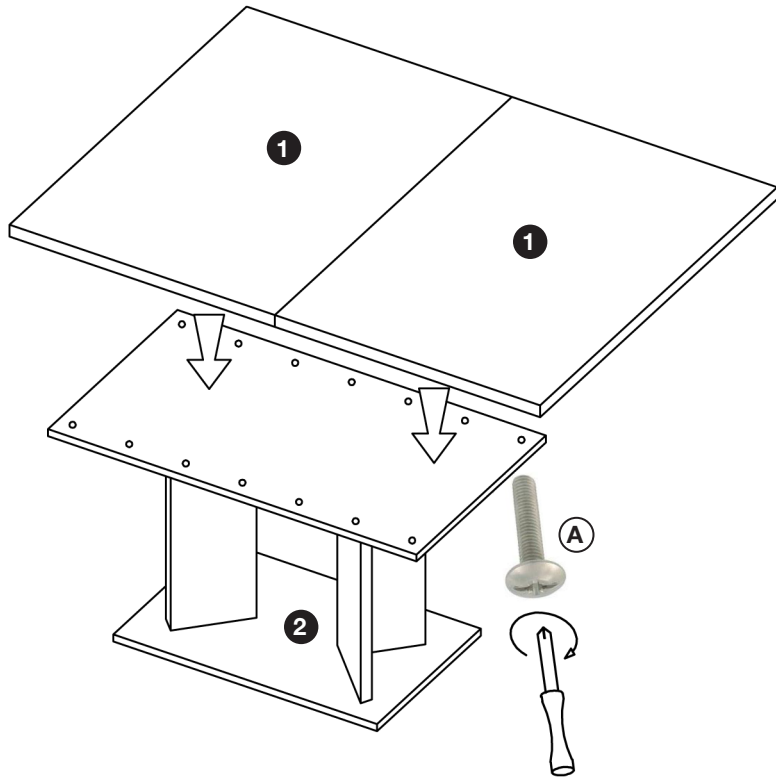
1	Dining Table Top (2pcs)
2	Dining Table Base (1pc)
3	Extension Leaf (1pc)

## HARDWARE CHECKLIST

A	 ScREW TBL 6Mx30 (6pcs)
---	--

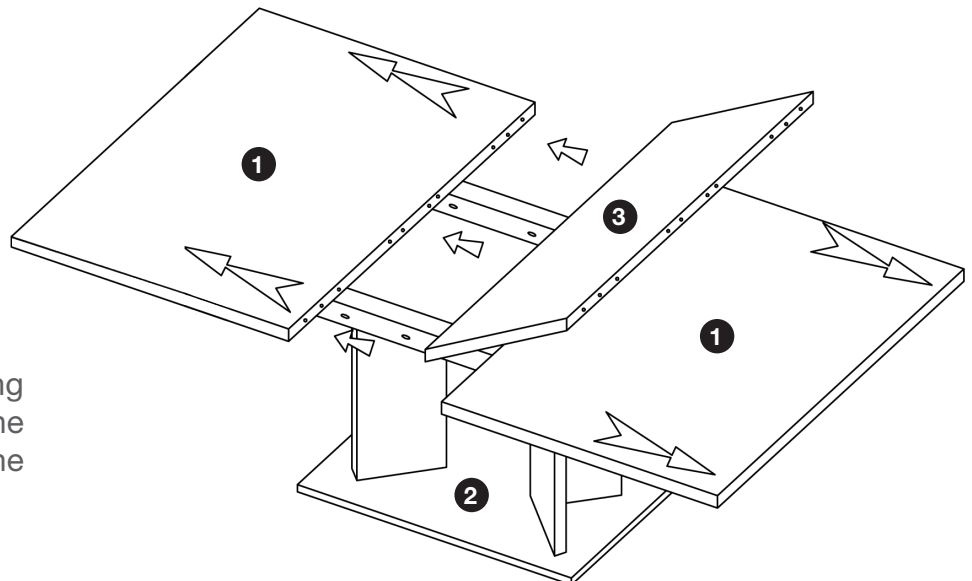
### Step 1

Attach the dining table top to the base, using the screws provided.



### Step 2

Open the table top following the arrows and place the extension leaf in between the two pieces.



# ASSEMBLY INSTRUCTIONS | NOBLE EXTENSION DINING TABLE

**IMPORTANT:** This unit requires at minimum 2 people to assemble



**DO NOT USE A DRILL FOR ASSEMBLY**



## PARTS CHECKLIST

1	Dining Table Top (2pcs)
2	Dining Table Base (1pc)
3	Extension Leaf (1pc)

## HARDWARE CHECKLIST

A	 ScREW TBL 6Mx30 (6pcs)
---	--

### Step 3

To close the table, open the table top and insert the extension leaf into the housing under the table top. Then close the table top.

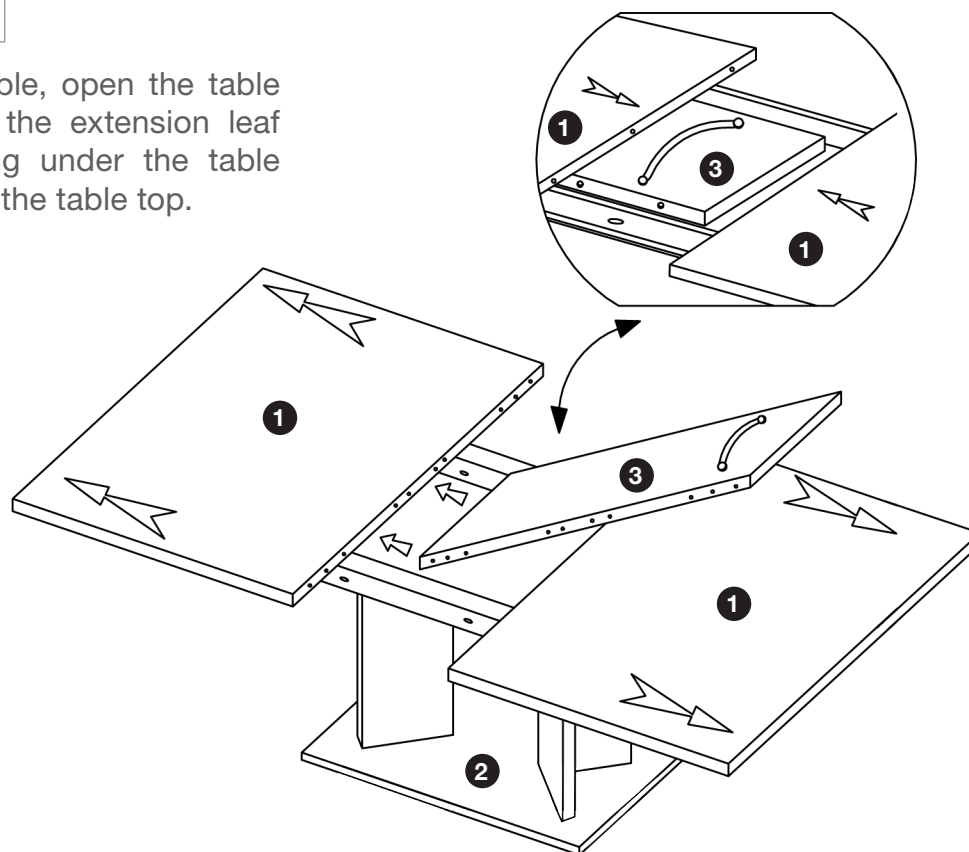


Table without  
Extension Leaf

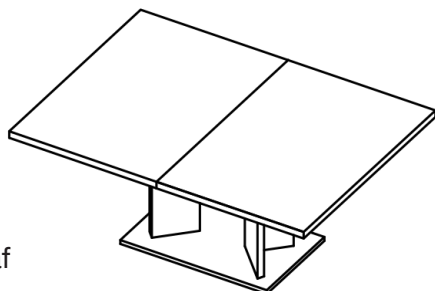


Table with  
Extension Leaf

